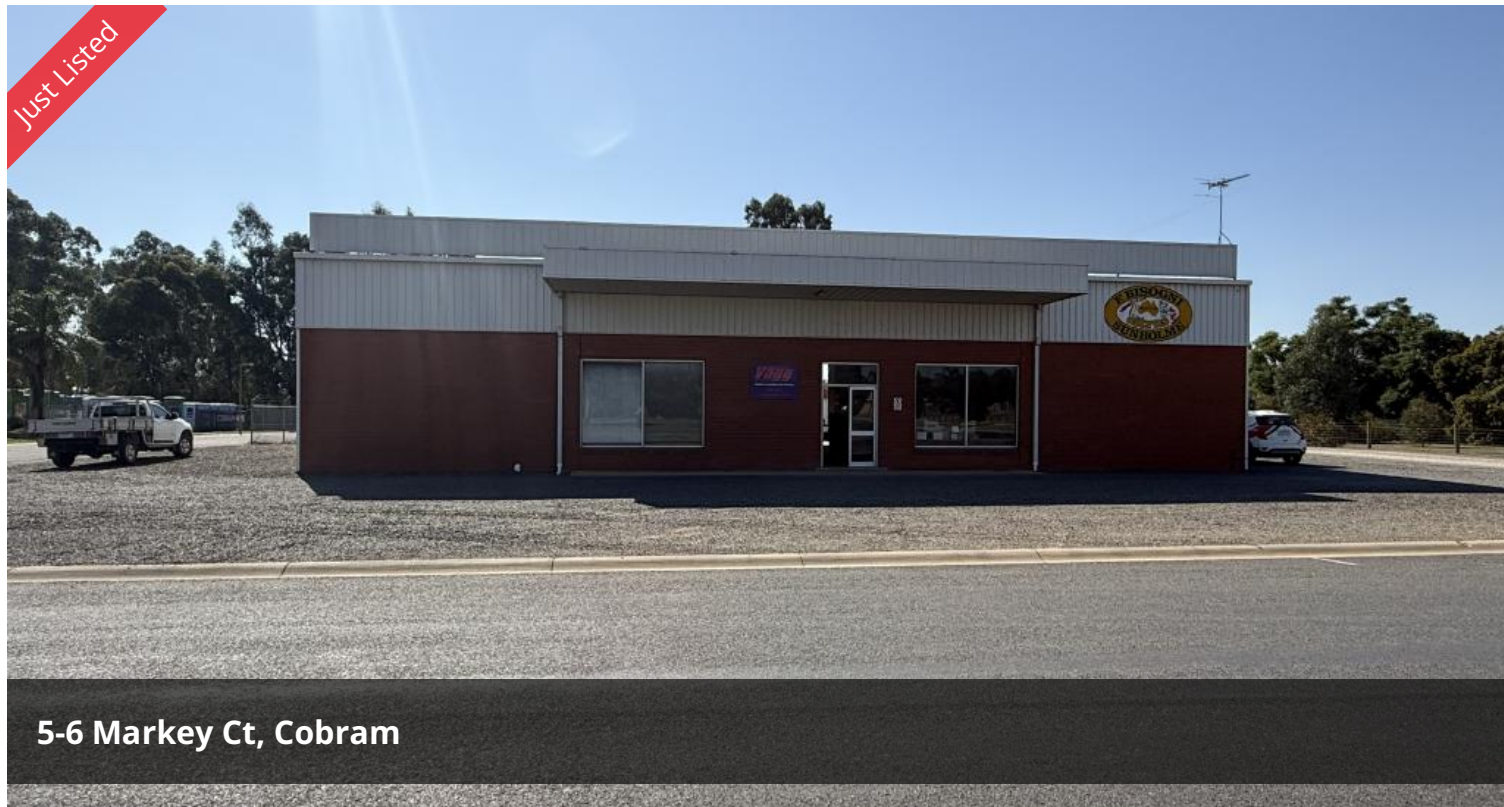


Just Listed



5-6 Markey Ct, Cobram



## Great Commercial Shed with Yard Space

Commercial Shed Ready Soon!

### Property Features:

- Approx. 480m<sup>2</sup> total floor area (approx. 24x20m)
- X2 High roller door access – easy entry for trucks and equipment (side and rear yard)
- Includes office space and onsite toilet facilities
- Clear-span layout for maximum usability
- Secure and accessible
- Fenced yard with room for truck deliveries

### Location Highlights:

- Situated in a highly sought-after commercial precinct
- Easy access to major roads and transport routes
- Surrounded by thriving businesses

Perfect for storage, trade operations, or light industrial use.

Contact us today to arrange an inspection or for more info.

**Price** \$600pw plus  
outgoings

**Property Type** Commercial

**Property ID** 5054

**Warehouse  
Area** 480 m2

### Agent Details

Amanda Ramsay - 0439 533 292

### Office Details

Cobram  
33 High Street Cobram VIC 3644  
Australia  
03 5871 1025



**ANDREW JENKINS**  
REAL ESTATE

These details have been prepared to assist solely in the marketing of this property. While all care has been taken to ensure the information herein is correct, we do not take responsibility for any inaccuracies. Accordingly all interested parties should make their own enquiries to verify the information.

The above information provided has been furnished to us by the vendor/s. We have not verified whether or not that information is accurate and do not have any belief in one way or the other in its accuracy. We do not accept any responsibility to any person for its accuracy and do no more than pass it on. All interested parties should make and rely upon their own inquiries in order to determine whether or not this information is in fact accurate.